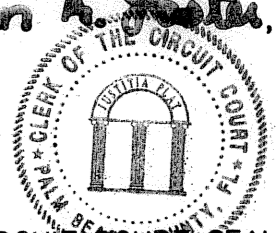
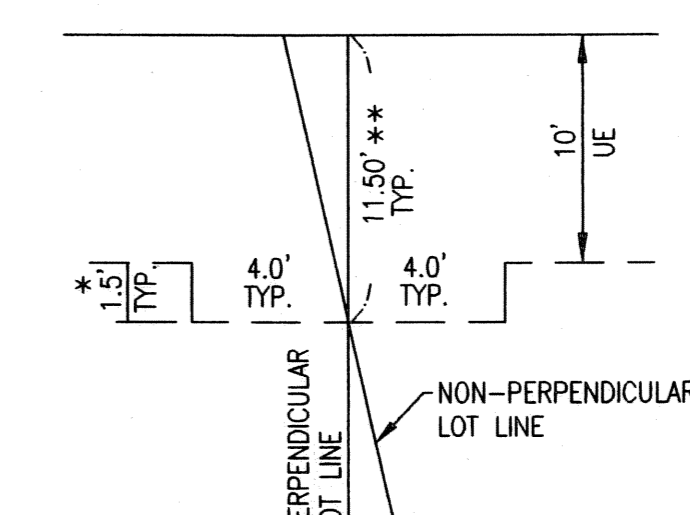


# MIRASOL PARCEL TEN

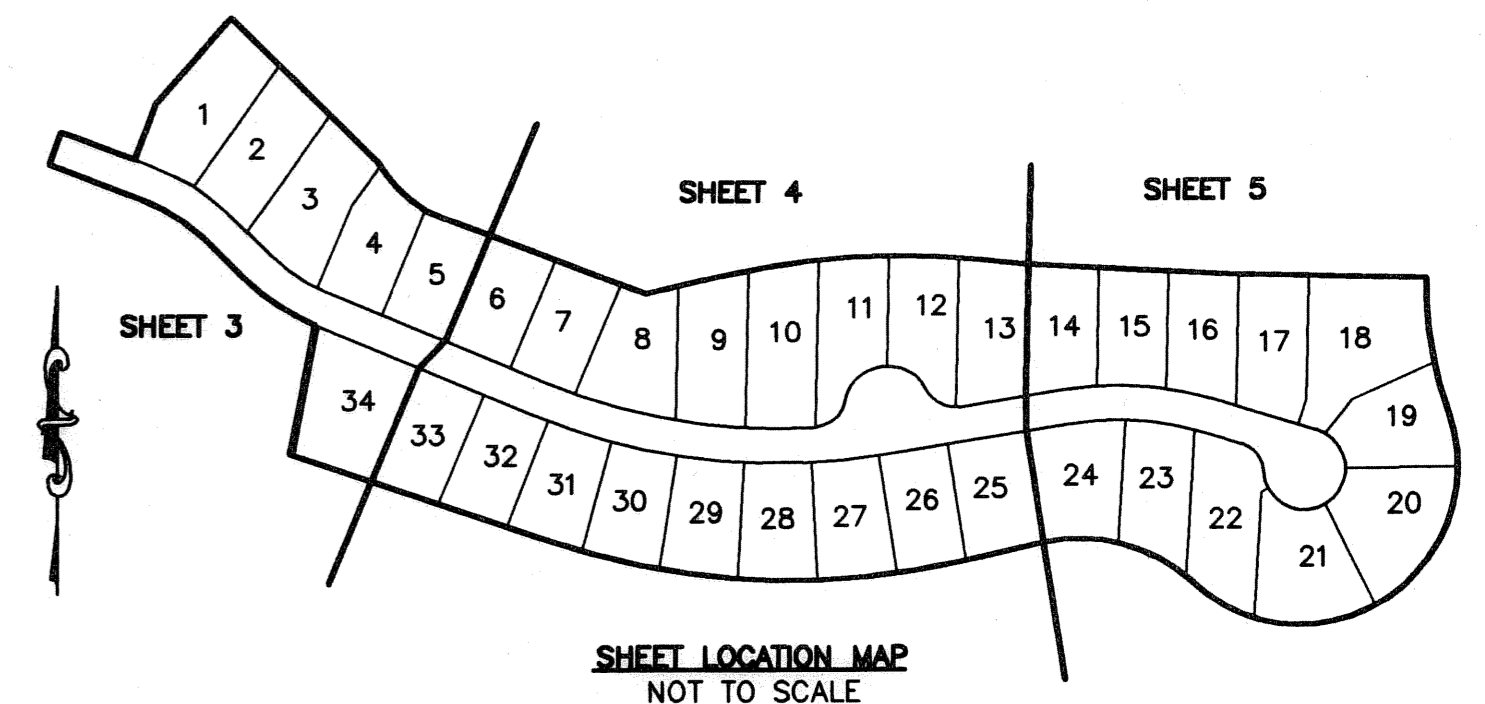
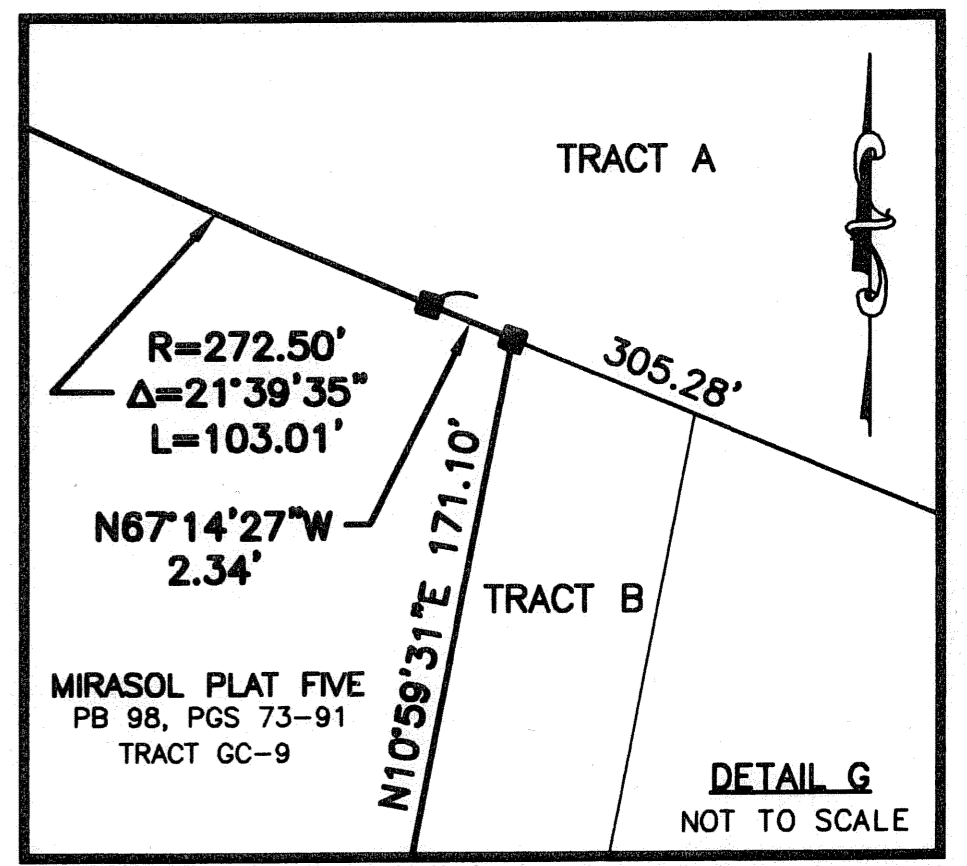
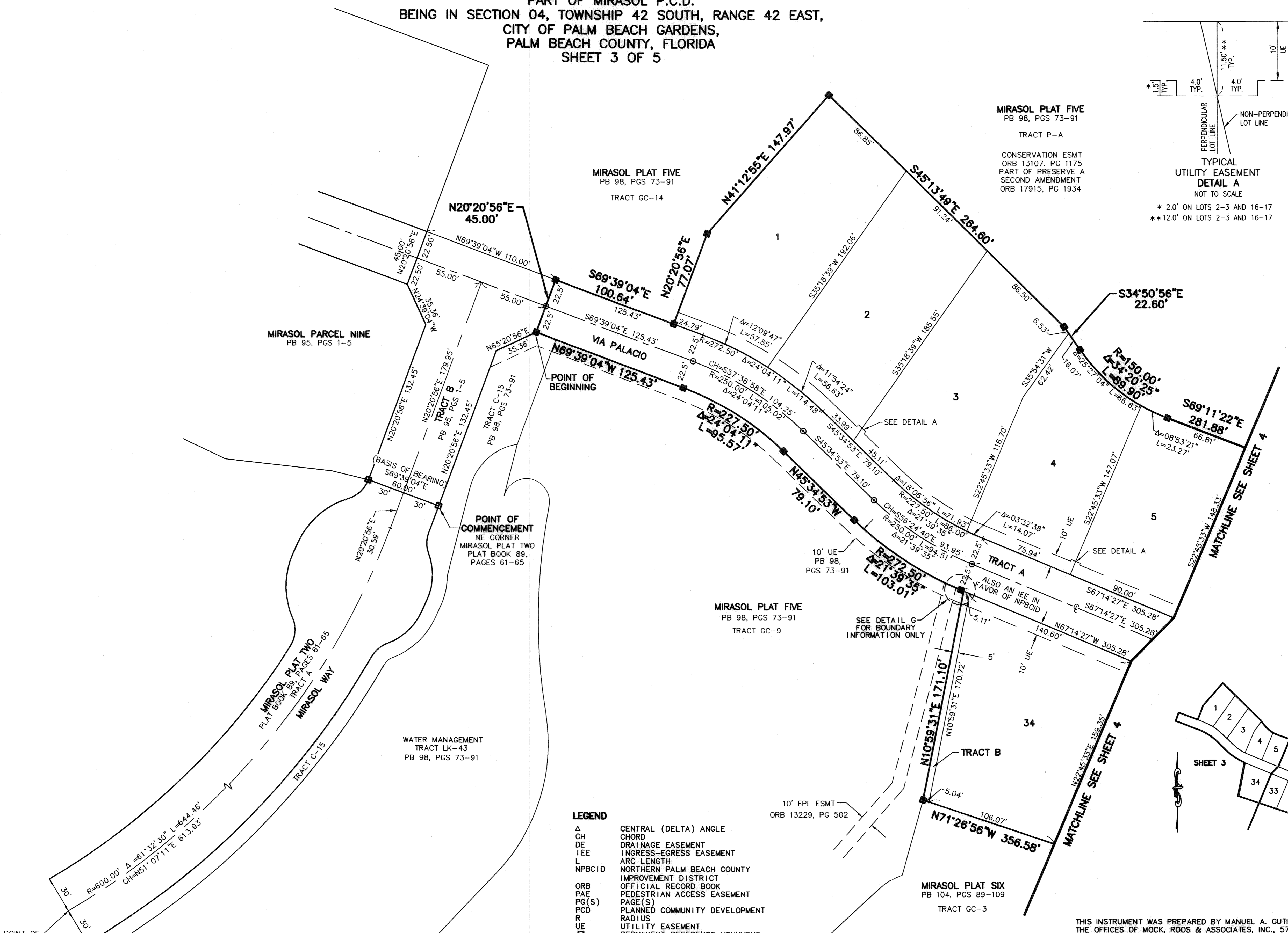
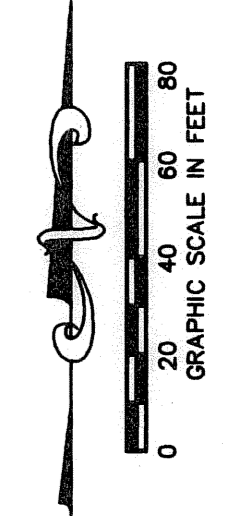
BEING A REPLAT OF TRACT 10, MIRASOL PLAT SIX, AS RECORDED IN PLAT BOOK 104, PAGES 89 THROUGH 109 OF THE PUBLIC RECORDS OF PALM BEACH COUNTY, FLORIDA  
 PART OF MIRASOL P.C.D.  
 BEING IN SECTION 04, TOWNSHIP 42 SOUTH, RANGE 42 EAST, CITY OF PALM BEACH GARDENS, PALM BEACH COUNTY, FLORIDA  
 SHEET 3 OF 5

189

STATE OF FLORIDA  
 COUNTY OF PALM BEACH  
 THIS PLAT WAS FILED FOR RECORD ON 11:16 AM THIS 11th DAY OF January AD, 2005 AND DULY RECORDED IN PLAT BOOK 104 ON PAGES 187 AND 191  
 SHARON R. BOCK,  
 CLERK & COMPTROLLER  
 BY: *Manuel A. Gutierrez*, D.C.  
  
 CIRCUIT COURT SEAL



TYPICAL UTILITY EASEMENT DETAIL A  
 NOT TO SCALE  
 \* 2.0' ON LOTS 2-3 AND 16-17  
 \*\* 12.0' ON LOTS 2-3 AND 16-17



- LEGEND**
- Δ CENTRAL (DELTA) ANGLE
  - CH CHORD
  - DE DRAINAGE EASEMENT
  - IEE INGRESS-EGRESS EASEMENT
  - L ARC LENGTH
  - NPBCID NORTHERN PALM BEACH COUNTY IMPROVEMENT DISTRICT OFFICIAL RECORD BOOK
  - ORB ORB
  - PAE PEDESTRIAN ACCESS EASEMENT
  - PG(S) PAGE(S)
  - PCD PLANNED COMMUNITY DEVELOPMENT
  - R RADIUS
  - UE UTILITY EASEMENT
  - PM PERMANENT REFERENCE MONUMENT FOUND LB 048 (4"x4" CONCRETE)
  - PR PERMANENT REFERENCE MONUMENT SET LB 048 (4"x4" CONCRETE)
  - PCP PERMANENT CONTROL POINT
  - SET LB 048
  - CL CENTERLINE
  - WLE WATERLINE EASEMENT
  - WMME WATER MANAGEMENT MAINTENANCE EASEMENT

THIS INSTRUMENT WAS PREPARED BY MANUEL A. GUTIERREZ, P.S.M. IN THE OFFICES OF MOCK, ROOS & ASSOCIATES, INC., 5720 CORPORATE WAY, WEST PALM BEACH, FLORIDA 33407.

SCALE:  
 1" = 40'  
 P.A. NO.:  
 99363.03  
 DATE:  
 MARCH, 2005  
 DRAWING NO.:  
 42-42-04-114

FLORIDA L.B. NO. 48  
**MOCK • ROOS**  
 ENGINEERS • SURVEYORS • PLANNERS  
 5720 Corporate Way, West Palm Beach, Florida 33407  
 (561) 683-3113, fax 478-7248

SHEET 3 OF 5  
**MIRASOL PARCEL TEN**  
 BEING A REPLAT OF TRACT 10, MIRASOL PLAT SIX, PLAT BOOK 104, PAGES 89 THROUGH 109 PART OF MIRASOL P.C.D. BEING IN SECTION 04, TOWNSHIP 42 SOUTH, RANGE 42 EAST, CITY OF PALM BEACH GARDENS, PALM BEACH COUNTY, FLORIDA

S:\top\top010.dwg, Jan10p02.dwg, 9/19/2005 8:18:02 AM EDT

REVISED 08-03-05  
 CAD FILE:  
 TAYLPA10\PA10RPO2